

Agency Partnerships in Kansas



July 2014

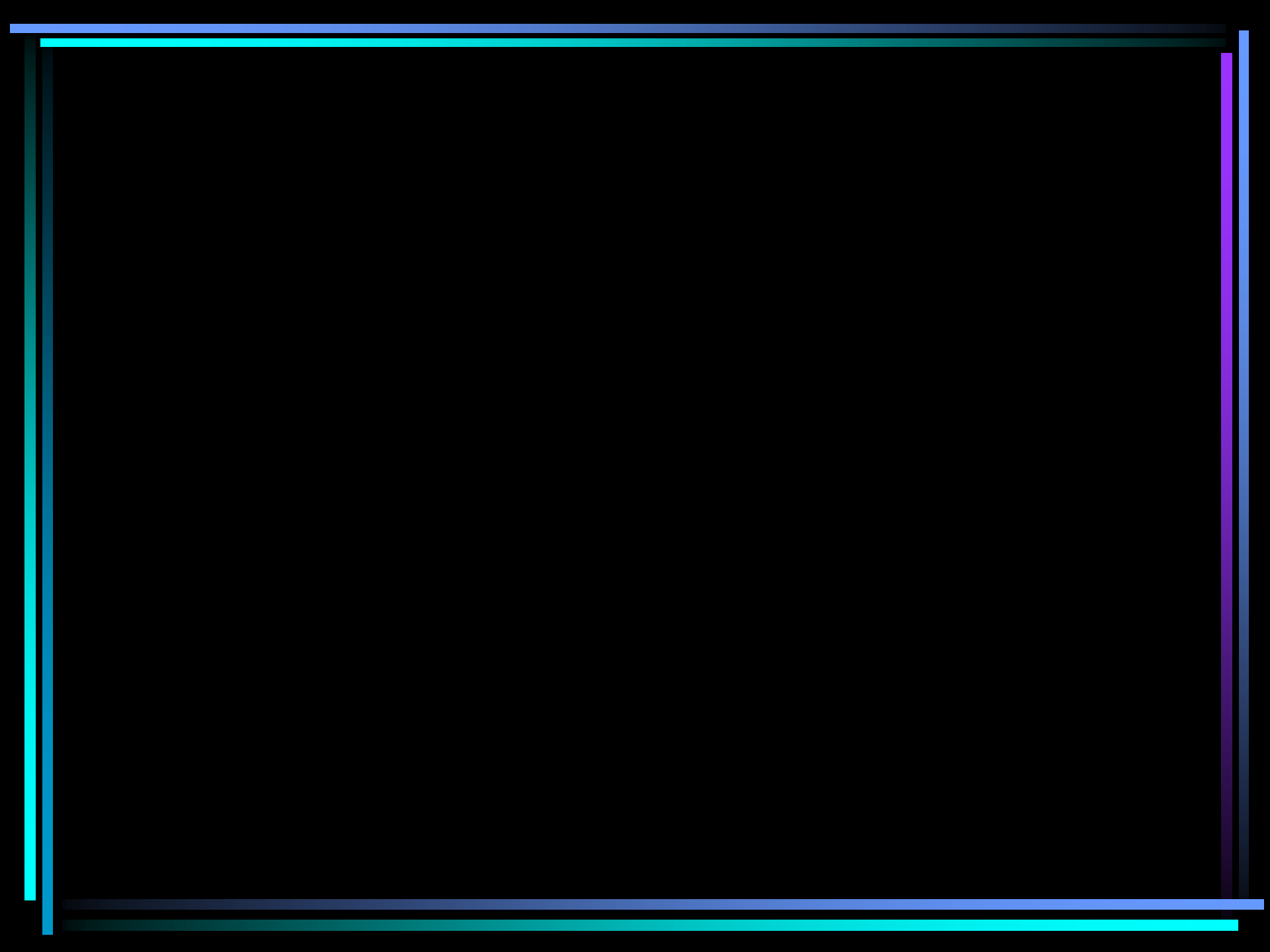
Joan Peterson:

**Landon State Office Building
CSAS, Driver Education
900 SW Jackson St., Suite 653
Topeka KS 66612**

Phone: 785-296-8107

Fax: 785-291-3791





ALL Partnerships:

KTSRO (Kansas Traffic Safety Resource Office)

Department of Revenue

KDOT (Kansas Department of Transportation)

Board of Regents (Higher Education)

Car Dealerships

AAA

MSF (Motorcycle Safety Foundation)

KDSEA, ADTSEA,

Kansas Insurance Commissioner

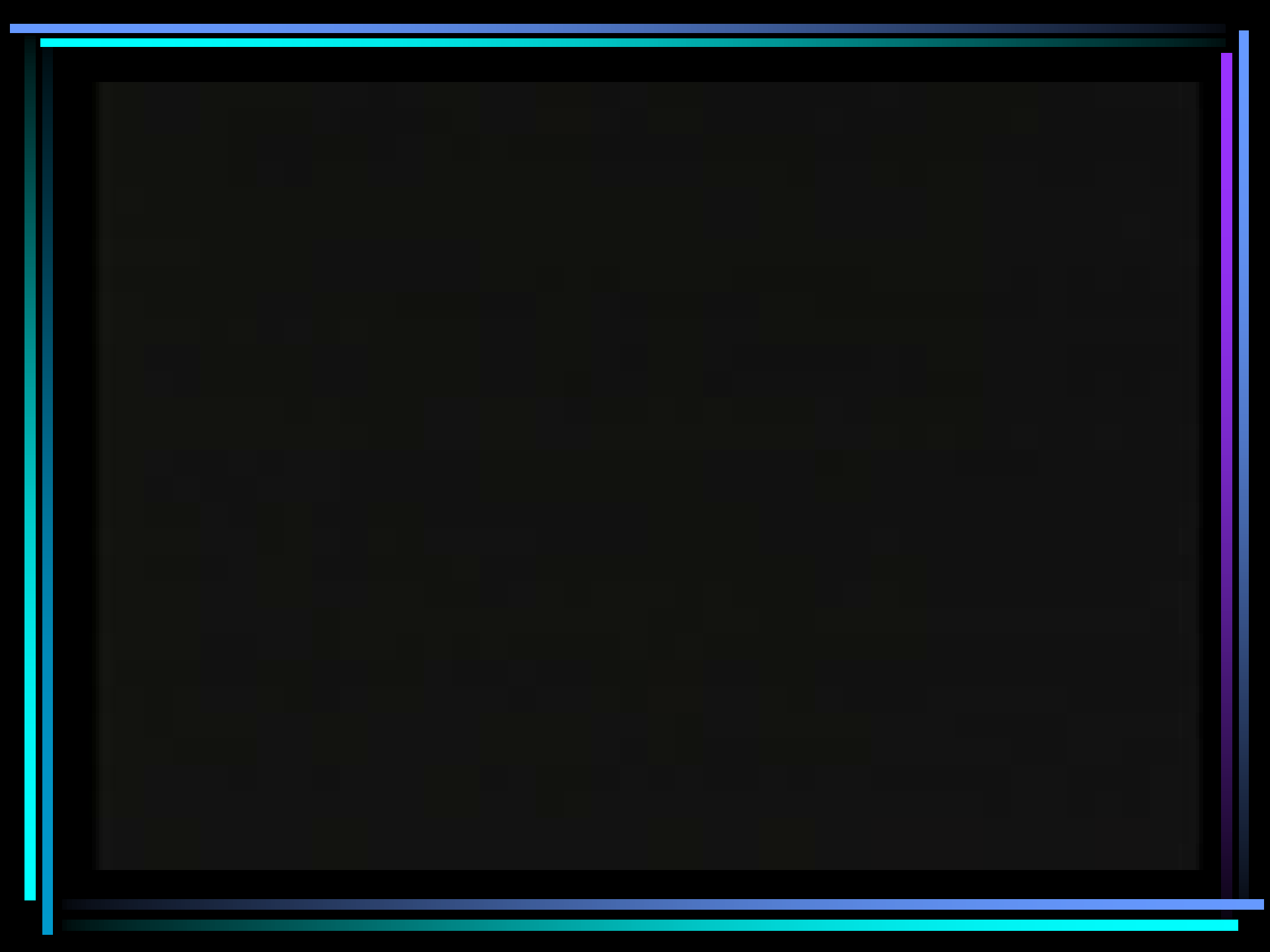




KTSRO

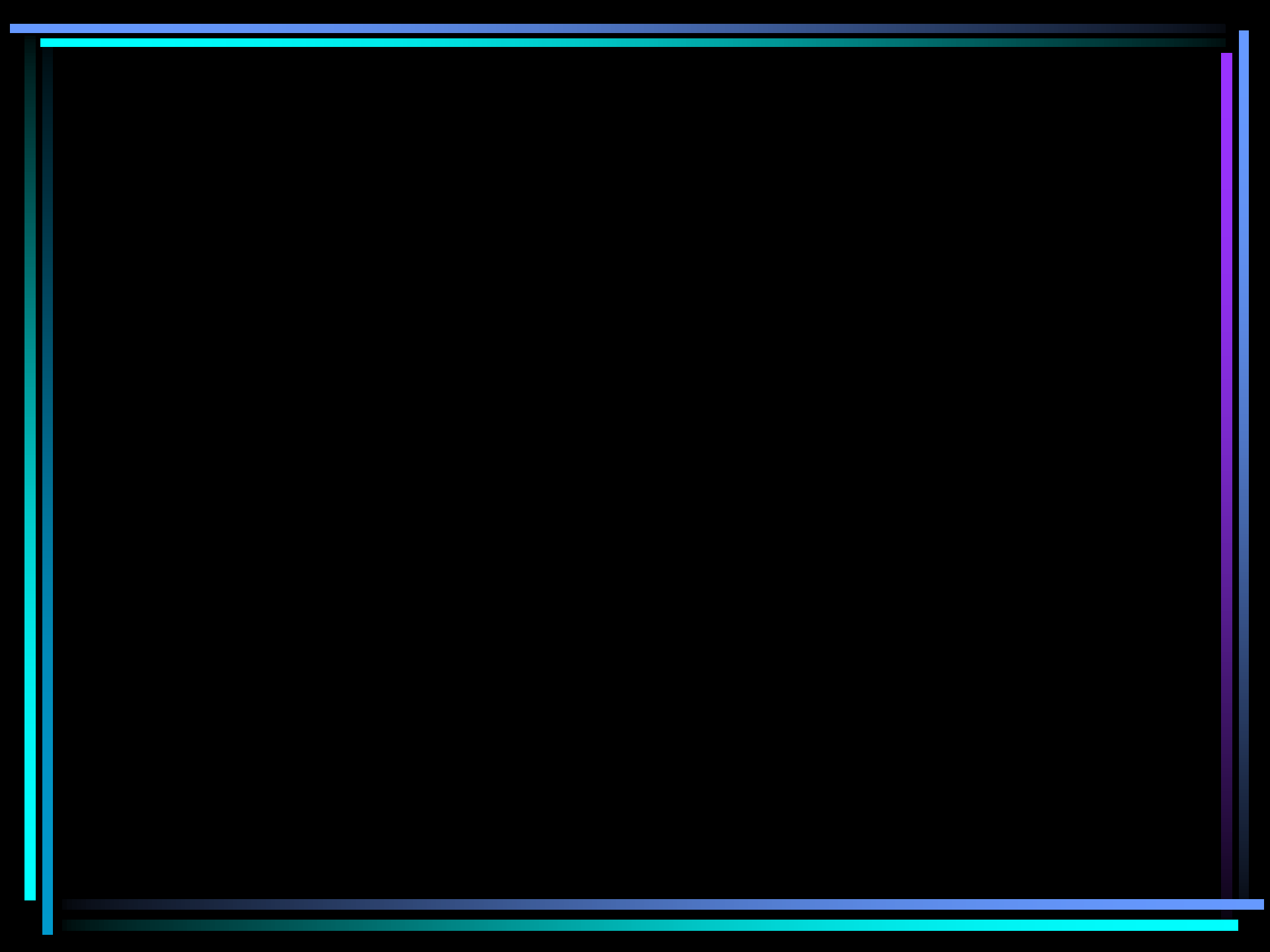
*Supplies to schools – posters, pens, key chains, pamphlets, video checkout, parent information, GDL law information, etc.





Department of Revenue

- *On-line DE 99's (student information provided in order to receive driver education driving permit)
- *Waivers for testing with C. of C.
- *Advocate with legislature



KDOT

- *Grants

- *Free materials (Maps, DVD's, promotional material)

- *State Conference partnership (Transportation Safety Conference)

Let's take a
look at our
next slide.



Board of Regents

- *Consultant on motorcycle schools
- *Curriculum approval
- *Audit programs and disseminate monies from State Safety Fund



Car Dealerships

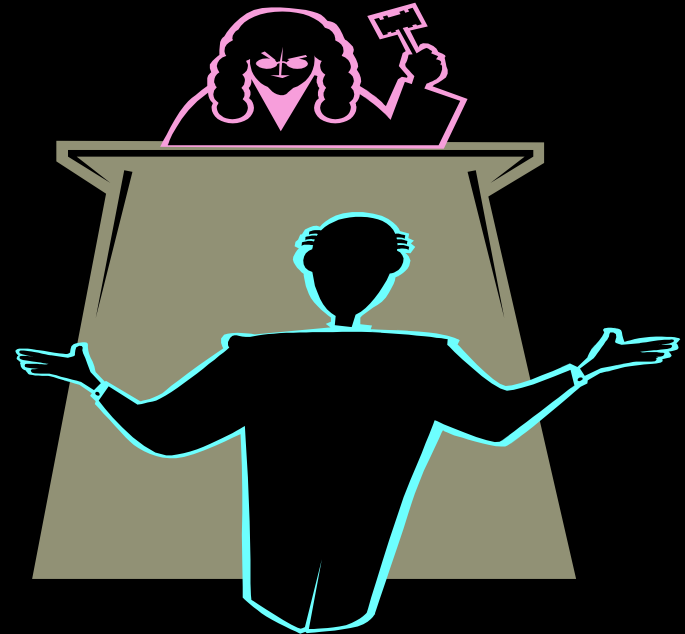
- * Lease program for driver education schools
- * Promotional gifts for conferences
- * State specific rules and regs in a handbook with driving information for instructors and parents

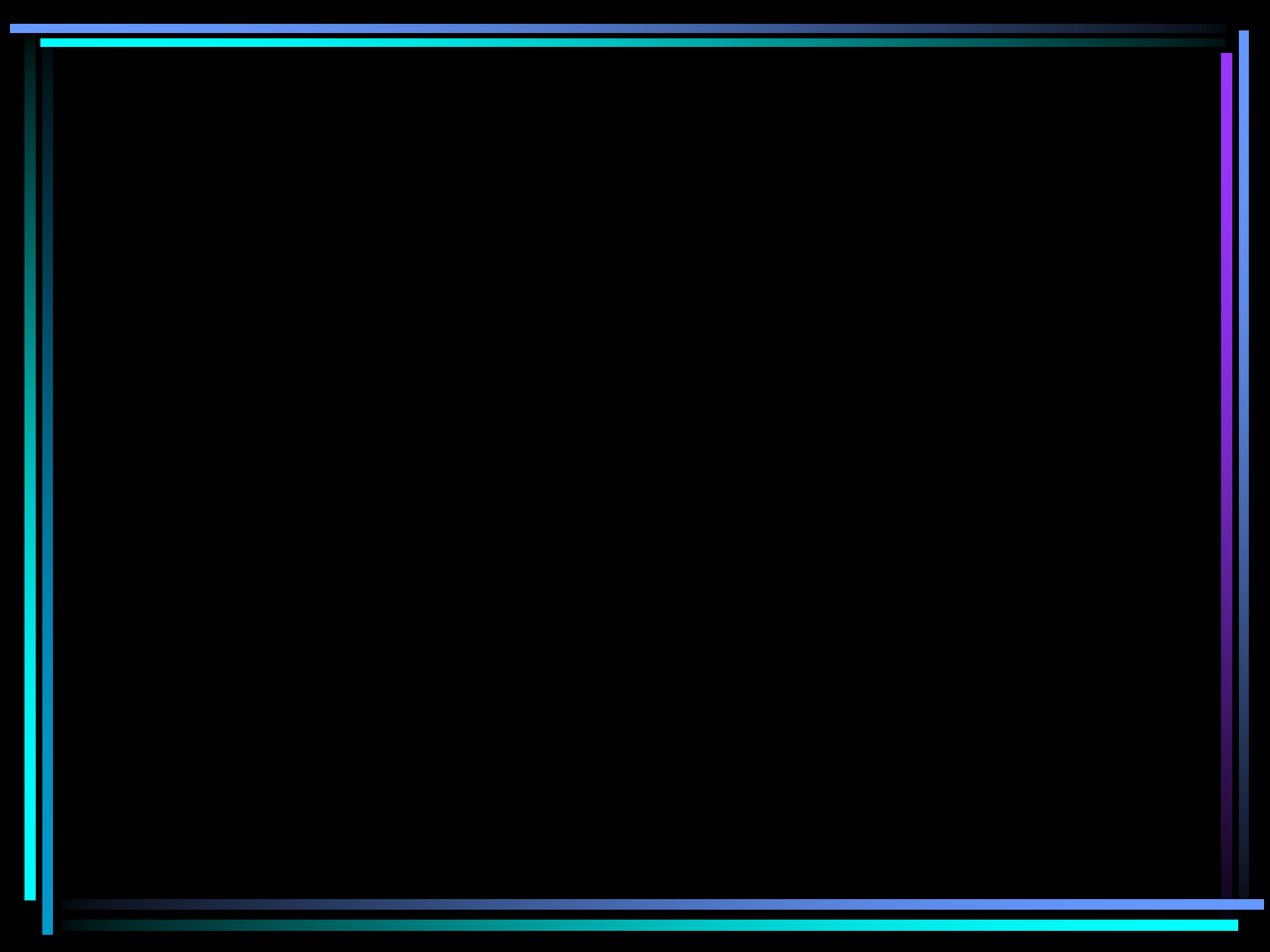


AAA

*Legislative Advocate who Provides Testimony when needed

*Supplies

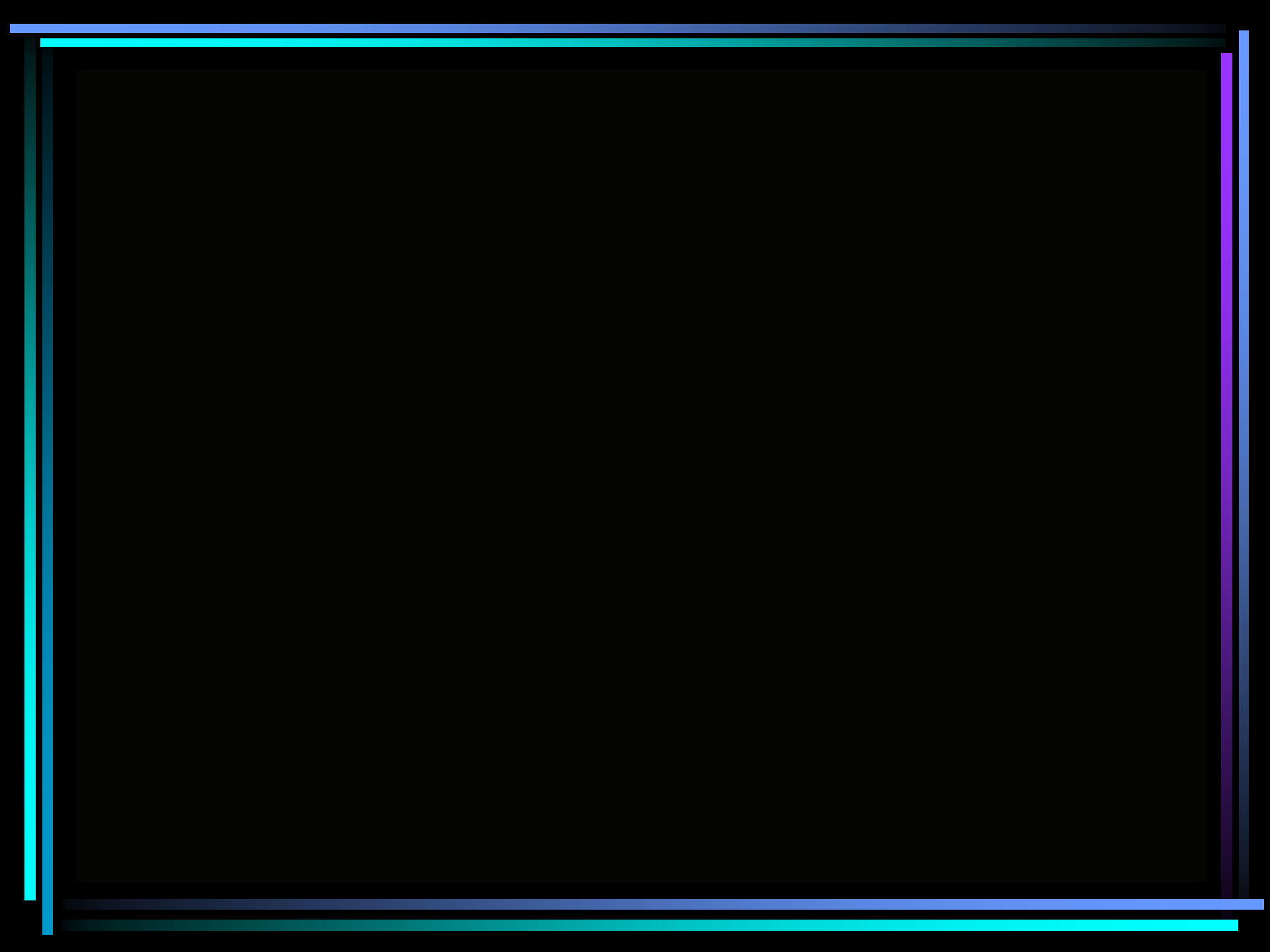




MSF

- *Curriculum Use
- *Range oversight and approval
- *Instructor licensing



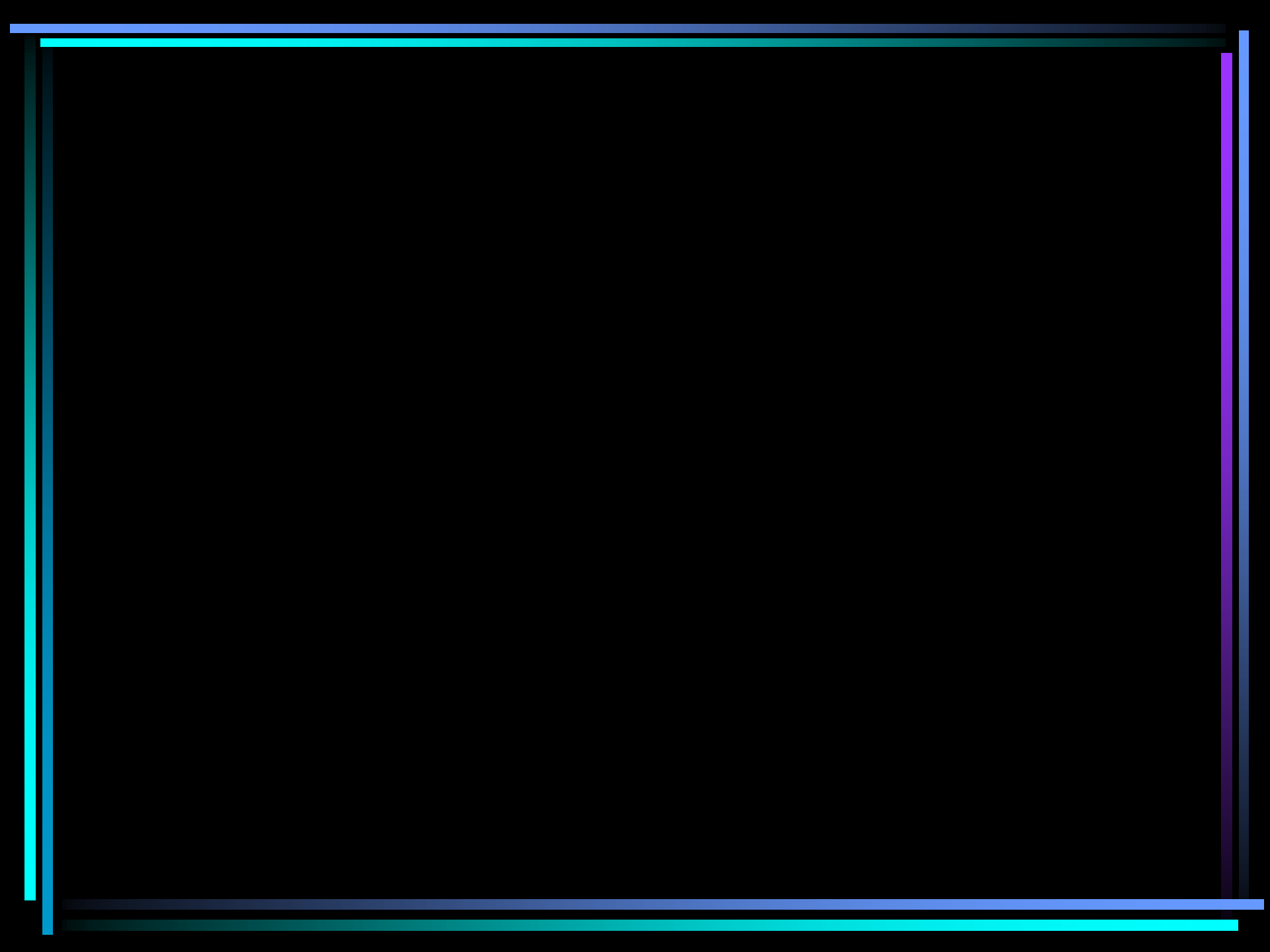


Kansas Insurance Commissioner

- * Driver Improvement Program Discounts

- * Monitoring and Approval of Programs





Kansas Highway Patrol

- *Facility use for State Conferences
- *Speakers at conferences and in schools



Thank you for attending my session!
No autographs, Please! 😊

Time For Questions Or Comments!

